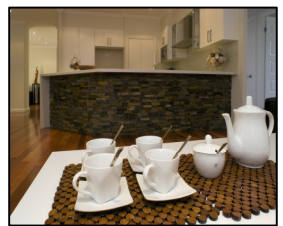




GREGORY – 28.05 Squares

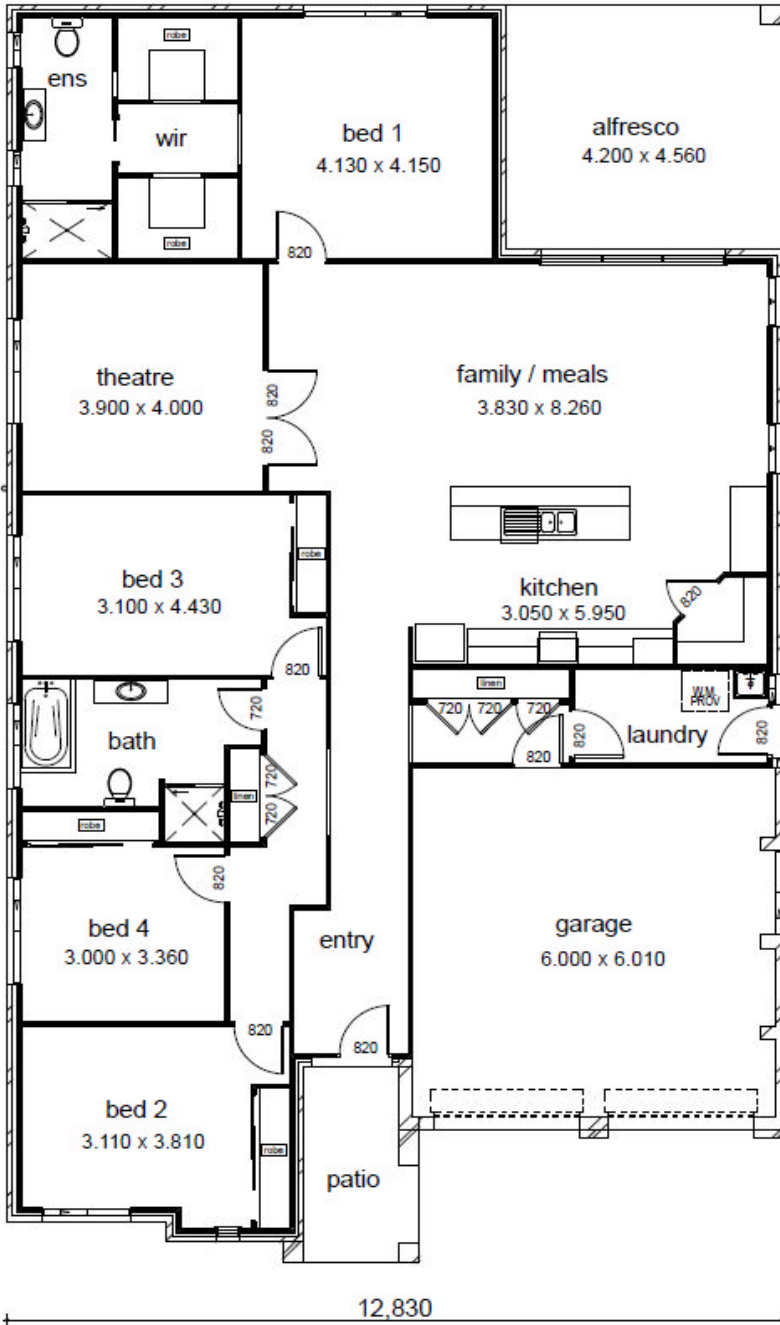
Starting from \$185,700



www.casaview.com.au

CASAVIEW HOMES – A division of Casaview Constructions Pty Ltd. Unit 1/10 Weld Street, Prestons, NSW 2170. Builders Licence No. 55277C. These flyers have been supplied by Casaview Homes. *GST inclusive. Casaview Homes reserves the right to revise the plans, specifications and pricing without notice or obligation. All drawings, photographs & 3D renderings are for illustrative purposes only and should be used as a guide only. Price is based on facade for face brick only. All designs are subject to relevant authority approval. ©Casaview Constructions Pty Ltd trading as Casaview Homes.

Building Since 1994



Frontage required – 15m

DATA	
1. ground floor	197.00
2. alfresco	19.15
3. garage	38.38
4. patio	6.20
	260.73 m²

www.casaview.com.au

8 7 8 3 8 8 0 0